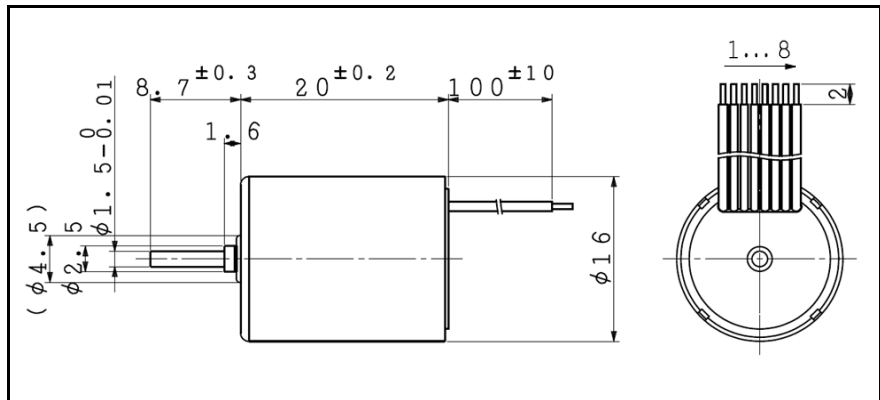
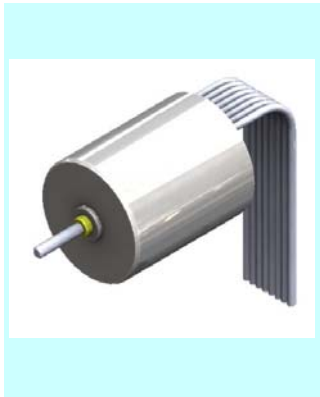


**BMS 16-20**

**∅ 16 , 1.90 mNm**

**with Hall sensors**



For combination with gearhead: SSG15, SPG16

Dimension in mm

Ordering number	BMS16-2001	BMS16-2004	BMS16-2013	
1	7.4	12.0	24.0	V
2	2.04	1.93	1.96	mNm
3	19500	19600	21000	rpm
4	739	441	238	mA
5	22000	22200	23700	rpm
6	94	59	31	mA
7	18.04	16.43	16.77	mNm
8	5.80	3.31	1.80	A
9	10.4	9.6	10.4	W
10	76	75	75	%
11	1.28	3.63	13.34	Ω
12	0.30	0.30	0.30	mNm
13	0.331	0.530	0.994	mV/rpm
14	3.16	5.06	9.49	mNm/A
15	1218	1353	1415	rpm/mNm
16	4.39	4.88	5.10	ms
17	0.34	0.34	0.34	gcm <sup>2</sup>
18	9.02	8.22	8.39	mNm

**Mechanical data**

19	Shaft radial play	0.015	mm
20	Shaft axial play	0.23	mm
21	Max. shaft radial load	0.27 (3.7 mm)	N
22	Max. shaft axial load	0.1	N
23	Max. shaft axial load at standstill	10	N

**Electrical connections**

#1	Lw	Motor winding W
#2	Lv	Motor winding V
#3	Lu	Motor winding U
#4	Vdd	Input voltage 3.0V
#5	Gnd	GND
#6	Hw	Hall sensor output W
#7	Hv	Hall sensor output V
#8	Hu	Hall sensor output U

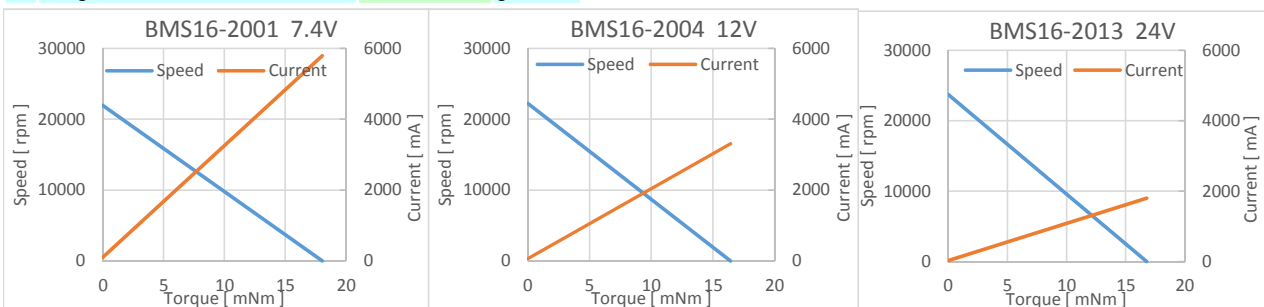
**Environmental specifications**

24	Operating temperature	-20 ~ 80	°C
25	Max. coil temperature	90	°C

**Other specifications**

26	Weight	28	g
----	--------	----	---

\*The characteristics are measured with our test driver.



V01

Adamant Namiki Precision Jewel Co.,Ltd

TEL: 03-5390-7620 FAX: 03-5390-8082

URL: www.ad-na.com/en/

E-mail: motor-sales@namiki.net

Specifications are subject to change without notice.