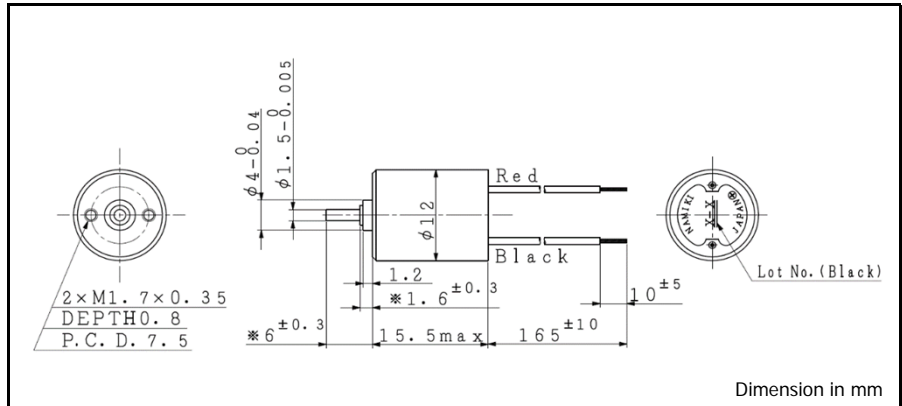
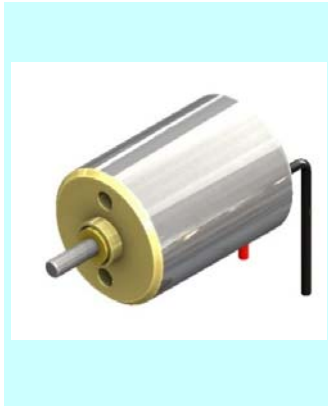


CMS 12-15 $\phi 12$, 0.51 mNm

Precious metal commutation, Sleeve bearing



For combination with gearhead: SSG12, SPG12

| Ordering number | CMS12-1506 | CMS12-1514 | |
|-----------------------------|------------|------------|------------------|
| 1 Nominal voltage | 7.4 | 12.0 | V |
| 2 Rated torque | 0.512 | 0.509 | mNm |
| 3 Rated speed | 21400 | 23100 | rpm |
| 4 Rated current | 234 | 155 | mA |
| 5 No load speed | 25400 | 27500 | rpm |
| 6 No load current | 43 | 29 | mA |
| 7 Stall torque | 3.27 | 3.24 | mNm |
| 8 Stall current | 1.26 | 0.83 | A |
| 9 Output power | 2.2 | 2.3 | W |
| 10 Max. efficiency | 66 | 66 | % |
| 11 Terminal resistance | 5.87 | 14.40 | Ω |
| 12 Friction torque | 0.12 | 0.12 | mNm |
| 13 Back-EMF constant | 0.281 | 0.422 | mV/rpm |
| 14 Torque constant | 2.68 | 4.03 | mNm/A |
| 15 Slope of N-T curve | 7771 | 8477 | rpm/mNm |
| 16 Mechanical time constant | 16.15 | 16.70 | ms |
| 17 Rotor inertia | 0.20 | 0.19 | gcm ² |
| 18 Max. torque | 1.64 | 1.62 | mNm |

Mechanical data

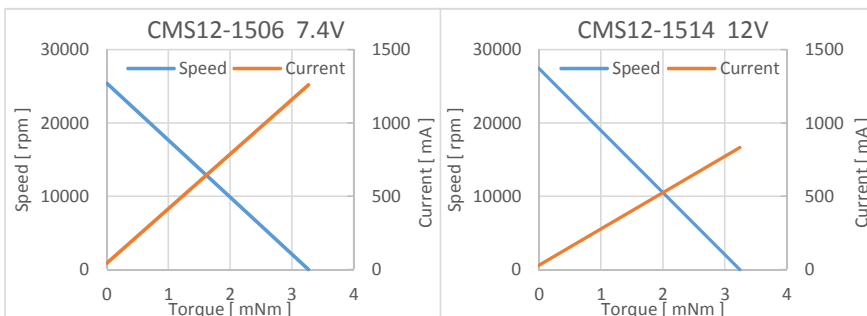
| | | |
|--|-------------|----|
| 19 Shaft radial play | 0.05 | mm |
| 20 Shaft axial play | 0.03 ~ 0.2 | mm |
| 21 Max. shaft radial load | 0.03 (5 mm) | N |
| 22 Max. shaft axial load | 0.1 | N |
| 23 Max. shaft axial load at standstill | 4.9 | N |

Environmental specifications

| | | |
|--------------------------|----------|--------------------|
| 24 Operating temperature | -20 ~ 60 | $^{\circ}\text{C}$ |
| 25 Max. coil temperature | 80 | $^{\circ}\text{C}$ |

Other specifications

| | | |
|-----------------------|-----------------|---|
| 26 Weight | 8.9 | g |
| 27 Number of segments | 5 | |
| 28 Bearing type | Sintered sleeve | |



V01