

PRECISION GEARMOTOR

GA12B**F

Spur Gearbox Series

Applications: Precision control fields like medical instrument, industrial control and so on.

Operating temperature range: -10~+80°C

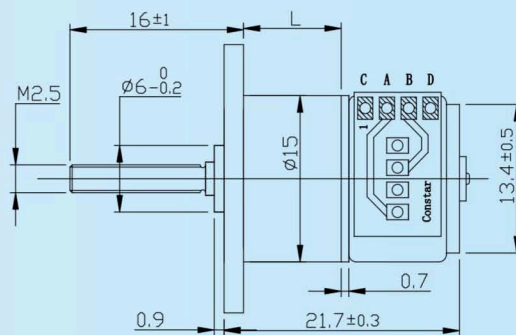
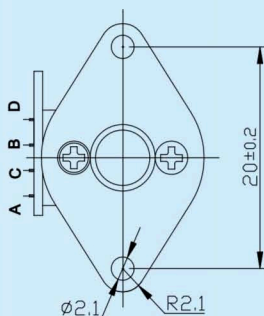
Motor Characteristics

			1511BY-03-150-L2-5.0
1	No. of phase		2
2	Excitation Mode		1-2
3	Voltage	V	5
4	Resistance	Ω	12.6
5	Step Angle	Deg	9°
6	Current	A	0.4
7	No-load Pull-in Frequency	pps	1800
8	No-load Pull-out Frequency	pps	2500
9	Detent Torque	mNm	0.80
10	Pull-in Torque	mNm	1
11	Load pull-in Frequency	pps	1000
12	Weight	g	9

Gearbox Characteristics

	Reduction ratio	Max. rated tuorque	Max. momentary torque	Length (L)
		mNm	mNm	mm
1	3, 5, 10	20	60	9
2	17, 20, 30, 36	30	90	9
3	50, 63	40	120	9
4	100, 150, 210	50	150	9
5	250, 298	70	200	9
6	380, 625, 1000	80	250	11

Outline Drawing



UNIT:mm

Other Options

- Lead wires length
- Shaft length
- Special coils