

GB16**R

Planetary Gearbox Series

Applications: Precision control fields like medical instrument, industrial control and so on.
 Operating temperature range: -10~+80°C

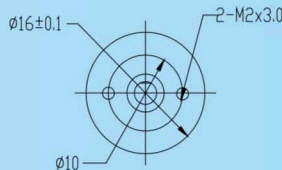
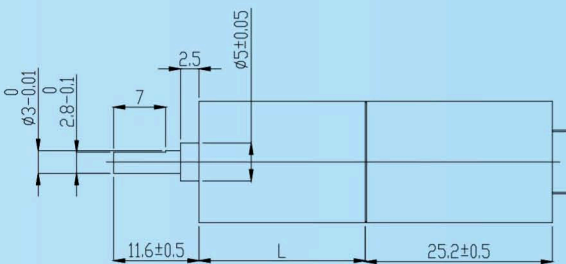
Motor Characteristics

			1627RCN51-21P-12.0
1	Voltage	V	12.0
2	Terminal resistance	Ω	71.3
3	No-load speed	rpm	8500
4	No-load current	mA	5
5	Stall torque	mNm	2.1
6	Stall current	mA	168
7	Nominal torque	mNm	1.00
8	Nominal speed	rpm	4521
9	Nominal current	mA	81
10	Max. output power	W	0.48
11	Max. efficiency	%	68
12	Back-EMF constant	mV/rpm	1.37
13	Torque constant	mNm/A	13.08
14	Speed/torque gradient	rpm/mNm	3979
15	Rotor inertia	gcm ²	1.8
16	Weight	g	24

Gearbox Characteristics

	Reduction ratio	Max. rated tuorque mNm	Max. momentary torque mNm	Length (L) mm
1	4	80	240	15.05
2	14, 16, 19, 29	120	360	18.7
3	53, 62, 72, 84, 104, 128, 157	160	480	22.35
4	231, 316, 370, 455, 561, 690	200	600	26
5	1014, 1621, 1996, 3027	240	720	29.65

Outline Drawing



UNIT:mm

Other Options

- Lead wires length
- Shaft length
- Special coils
- Encoder