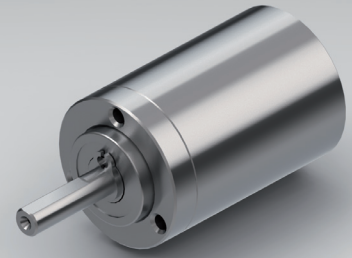


## PLANETARY GEARBOX GPL016

stainless steel version



		1-STAGE		2-STAGE		3-STAGE			
Ratio i:1	Max. motor shaft-ØD	Ratio i:1	Max. motor shaft-ØD	Ratio i:1		Max. motor shaft-ØD			
				36	5	48	5		
				64	3	84	5		
				9	5	112	3		
				12	5	147	3		
3	5	16	3	196	3	343	1		
4	3	21	5	28	3				
7	1								
Max. rated torque continuous		Nm		0.1		0.3		0.5	
Max. efficiency at max. rated torque continuous		%		90		85		80	
Average backlash at no load		arcmin ≤		20		35		50	
Weight without adapter plate		g		20		25		30	
Dimension L		mm		18.5		23.5		28.5	
Dimension A		mm		3					
Dimension B		mm		7.2					
Max. radial load	F <sub>R</sub>	5 mm from shaft end	N	30					
Max. axial load	F <sub>A</sub>		N	10					
Max. continuous rated speed at drive		min <sup>-1</sup>		6000					
Max. intermittent rated speed at drive		min <sup>-1</sup>		10000					
Temperature range	Type Standard	°C		-30 / +90					
Temperature range	Type V	°C		-40 / +90					

**Standard scope of delivery** Gearbox lubricated for duration of service life, dust-proof package, motor pinion and assembly instructions (adapter plate optional).

Customized versions also available for small quantities.

Type V = heavy duty version

Changes reserved © GYSIN AG | 05/2015