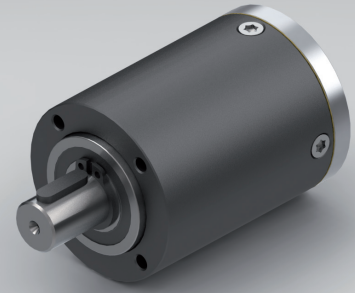


**Standard scope of delivery** Gearbox lubricated for duration of service life, dust-proof package, motor pinion, mounting screws, paper gasket and assembly instructions (adapter plate optional).  
**Customized versions also available for small quantities.**  
**Stainless steel version on request.**

## PLANETARY GEARBOX GPL042K



		1-STAGE	2-STAGE	3-STAGE	
Ratio i:1	Max. motor shaft-ØD	Ratio i:1		Ratio i:1	
		Max. motor shaft-ØD	Max. motor shaft-ØD	Max. motor shaft-ØD	Max. motor shaft-ØD
				49	8
				56	8
	12.25	8	64	8	8
	14	8	70	8	8
	16	8	80	8	8
	20	8	100	8	8
	24	8	120	8	8
	25	6	144	8	8
3.5	8	30	6	184	8
4	8	30.67	8	235.11	8
5	6	38.33	6	293.89	6
6	4	46	4	352.67	4
7.67	3	58.78	3	450.63	3

Rated torque continuous	Type Standard	Type R	Nm	0.7	4	15
Rated torque intermittent	Type Standard	Type R	Nm	1.4	8	30
Rated torque continuous	Type V	Type S	Nm	1.4	8	15
Rated torque intermittent	Type V	Type S	Nm	3	15	30
Max. efficiency at rated torque			%	90	85	80
Average backlash at no load	Type Standard	Type V	arcmin ≤	20	35	50
Average backlash at no load	Type R		arcmin ≤	12	20	30
Average backlash at no load	Type S		arcmin ≤	8	12	15
Weight without adapter plate			g	315	400	485
Dimension L			mm	38	50.5	63
Dimension A			mm		7.5	
Dimension B			mm		20.5	
Max. radial load	F <sub>R</sub>	8.5 mm from shaft end	N		250	
Max. axial load	F <sub>A</sub>		N		200	
Max. continuous rated speed at drive			min <sup>-1</sup>		5000	
Max. intermittent rated speed at drive			min <sup>-1</sup>		8000	
Temperature range			°C		-25 / +90	

Type V = heavy duty version | Type R = reduced backlash version | Type S = low backlash version

Changes reserved © GYSIN AG | 05/2015